

Angiogenesis, Exudation, and Degeneration 2014



MIAMI, FLORIDA

February 8, 2014

Bascom Palmer
Eye Institute

*Sponsored by the
University of Miami Miller School of Medicine*

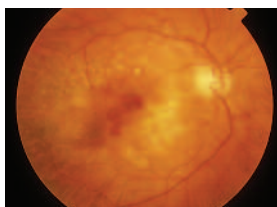


UNIVERSITY OF MIAMI
MILLER SCHOOL
of MEDICINE

BASCOM PALMER EYE INSTITUTE

Angiogenesis, Exudation, and Degeneration 2014

Bascom Palmer Eye Institute invites you to join us in February 2014 for our eleventh annual angiogenesis meeting. This unique and exciting symposium entitled *Angiogenesis,*

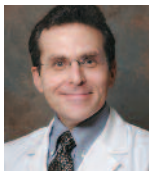


Exudation, and Degeneration 2014 will be held February 8, 2014 at the Mandarin Oriental Hotel in Miami, Florida. The meeting will feature an exceptional gathering of basic scientists, clinicians, and healthcare experts, all focused on understanding and treating neovascular and exudative diseases of the eye. The meeting will highlight the revolutionary pharmacotherapies now in development and clinical practice for the management of neovascular AMD, macular edema, diabetic retinopathy, and retinopathy of prematurity with a special emphasis on the present and future financial impact of these drugs on clinical practices and Medicare.



Mandarin Oriental, Miami

COURSE CO-DIRECTORS



Philip J. Rosenfeld, MD, PhD

Professor of Ophthalmology
Bascom Palmer Eye Institute
University of Miami Miller School of Medicine
Course Co-Director, Angiogenesis 2014

Harry W. Flynn, Jr., MD

Professor of Ophthalmology
The J. Donald M. Gass Distinguished
Chair in Ophthalmology
Bascom Palmer Eye Institute
University of Miami Miller School of Medicine
Course Co-Director, Angiogenesis 2014



Carmen A. Puliafito, MD, MBA

Dean, Keck School of Medicine
May S. and John Hooval Dean's Chair in Medicine
Professor of Ophthalmology and Health Management
Doheny Eye Institute
University of Southern California
Course Associate Director, Angiogenesis 2014

COURSE DESCRIPTION

Angiogenesis 2014 follows the tradition of excellence established by the widely acclaimed Angiogenesis programs between 2004 and 2014. Designed for retinal specialists, general ophthalmologists and researchers, the current program will review the latest therapies for exudative eye diseases and the use of these new treatments in clinical practice. We will emphasize current and future treatments for a broad spectrum of retinal diseases with special emphasis on age-related macular degeneration and diabetic retinopathy.

COURSE OBJECTIVES

Upon completion of this program, participants should be able to:

- Enhance patient care by evaluating the current global use of anti-VEGF drugs for exudative ocular diseases
- Manage patients with anti-VEGF therapy through the preferred dosing practices
- Improve management skills by evaluating all the risks associated with injections of anti-VEGF drugs
- Analyze results of clinical trials in exudative macular diseases and apply to clinical practice
- Evaluate the benefits and limitations of combination therapies for exudative diseases
- Evaluate the benefits and limitations of different imaging strategies for age-related macular degeneration
- Enhance patient care by analyzing the genetic basis for different macular and retinal degenerative conditions
- Analyze the rationale for emerging treatments for different macular and retinal degenerative conditions
- Identify the types of stem cells and appreciate how they will be used to treat macular diseases

PROGRAM

Subject to change

SATURDAY, FEBRUARY 8, 2014

7:00 am	Registration and Continental Breakfast	10:1
7:55	Welcome and Overview <i>Philip J. Rosenfeld, MD, PhD, Harry W. Flynn, Jr., MD, and Carmen A. Puliafito, MD, MBA</i>	10:2
	SESSION I – Dry Age-Related Macular Degeneration	
8:00	Common and Rare Genetics of Macular Degeneration 2014: Paths to Treatment <i>Johanna M. Seddon, MD, SCM</i>	10:3
8:10	Toward a Refined Understanding of Genotype-Phenotype Associations in Age-related Macular Degeneration <i>Gregory S. Hageman, PhD</i>	10:4
8:20	Rehabilitating Lipofuscin as a Marker of RPE Health: Laboratory Autofluorescence Insights <i>Christine A. Curcio, PhD, FARVO</i>	11:0
8:30	AREDS2 Update <i>Emily Y. Chew, MD</i>	11:1
8:40	Two Color Microperimetry as an Endpoint for Dry Age- Related Macular Degeneration Trials: Present Status <i>Karl G. Csaky, MD, PhD</i>	11:2
8:50	Preclinical and Initial Clinic Results of Idebenone, A Ubiquinone Analog for Dry AMD <i>Scott W. Cousins, MD</i>	11:4
9:00	Membrane Attack Complex (MAC), Protectin (CD59) and AMD <i>Elias Reichel, MD</i>	11:5
9:10	Anti-Factor D Therapy for Atrophic AMD: Phase II Clinical Trial Results <i>Carl D. Regillo, MD, FACS</i>	12:0
	SESSION II: Stem Cells for Retinal Diseases	
9:20	Application of iPS Cells to Retinal Diseases <i>Masayo Takahashi, MD, PhD</i>	12:1
9:30	h-ESC Derived RPE Transplantation for Atrophic AMD <i>Ninel Z. Gregori, MD</i>	12:2
9:40	The California Project to Cure Blindness – An Update <i>David R. Hinton, MD, FARVO</i>	12:3
9:50	Subretinal Transplantation of Human Central Nervous System Stem Cells (HuCNS-SC) for the Treatment of Geographic Atrophy: Scientific Rationale and Study Design <i>Theodore Leng, MD, MS</i>	1:20
10:00	Microcatheter Delivery of Cell Therapy CNTO 2476 for Atrophic Age Related Macular Degeneration <i>Allen C. Ho, MD</i>	1:30

10:10	The London Project - RPE Sheets for AMD <i>Lyndon da Cruz, MD, MA, FRACO, FRCOph, PhD</i>	1:40
10:20	Stem Cell Based 3D Printing of Retina <i>Kang Zhang, MD, PhD</i>	1:50
		2:00
	SESSION III – Neovascular AMD: Conbercept Phase III Results	
	Moderator: Philip J. Rosenfeld, MD, PhD	2:10
10:30	Conbercept Development and Clinical Trials Peter K. Kaiser, MD	
10:45	Treating Neovascular AMD by Using Conbercept: Preliminary Results from AURORA & PHOENIX Studies <i>Xiaoxin Li, MD</i>	2:20
		2:30
11:00	Imaging Data from the Phase 3 Clinical Trial of Conbercept in Neovascular AMD <i>Ronald P. Danis, MD</i>	2:40
11:15	Q&A/Discussion	2:50
	SESSION IV – Neovascular AMD	
11:25	CATT and Beyond <i>Daniel F. Martin, MD</i>	3:00
11:40	IVAN and Beyond <i>Usha Chakravarthy, MD</i>	3:10
11:55	Effect of Early, Persistent Macular Fluid on Visual Acuity in Wet AMD: Subgroup Analyses of the VIEW 1 VIEW 2 Studies <i>Philip J. Rosenfeld MD, PhD</i>	3:20
12:05 pm	Does Anti-VEGF Therapy Promote Geographic Atrophy in Exudative AMD? <i>Jason S. Slakter, MD</i>	3:30
12:15	Dry Retinal Volume: Predicting Outcomes after Pharmacotherapy <i>Srinivas R. Sadda, MD</i>	
12:25	Systemic Safety of Anti-VEGF Therapy Robert L. Avery, MD	3:40
12:35	Lunch	
	SESSION IV – Neovascular AMD (continued)	3:50
1:20	Clinicopathologic Correlation of Eyes with Streptococcal Endophthalmitis Following Intravitreal Injections <i>Sander R. Dubovy, MD</i>	4:00
1:30	The Role of Genetics in Response to Anti-VEGF Therapy in Wet AMD <i>Jaclyn L. Kovach, MD</i>	

1:40	Immunoglobulins for CNV: Are Generics Just as Good? <i>Jayakrishna Ambati, MD</i>	4:10
1:50	Pre-Clinical Investigations of Intravitreal Zaltrap <i>Michel E. Farah, MD</i>	4:20
2:00	Results of the ROLL Study: Conversion of PEDs from 2mg Ranibizumab to 2mg Aflibercept <i>Anne E. Fung, MD</i>	4:30
2:10	Change in PED Volume Following the Switch from Bevacizumab/Ranibizumab to Aflibercept <i>Mariana R. Thorell, MD</i>	4:40
2:20	Update on Encapsulated Cell Technology for Wet AMD <i>Glenn J. Jaffe, MD</i>	4:50
2:30	Oral Anti-VEGF Therapy for Wet AMD <i>David M. Brown, MD, FACS</i>	
2:40	Anti-VEGF Gene Therapy: Early Clinical Results Using the Ocular Biofactory in Wet AMD <i>Thomas W. Chalberg, PhD</i>	5:00
2:50	Morphologic Correlation of Visual Outcome with Anti-PDGF Combination Treatment in Exudative AMD <i>Pravin U. Dugel, MD</i>	5:10
3:00	Stereotactic X-ray Radiotherapy for Neovascular AMD <i>Darius M. Moshfeghi, MD</i>	5:20
3:10	Update on Treatment with Squalamine Eye Drops <i>Lawrence J. Singerman, MD, FACS, FICS</i>	5:30
3:20	Integrin Antagonism in AMD and DME <i>Hugo Quiroz-Mercado, MD</i>	5:40
3:30	Inhibitor of Differentiation (Id) Proteins and Genes: A New Target for the Treatment of Posterior Segment Neovascularization <i>Glenn L. Stoller, MD, FACS</i>	5:50
	SESSION V – Vitreomacular, Retinovascular, and Choroidovascular Diseases	6:00
3:40	Current Clinical Trials for Hereditary Chorioretinal Degenerations <i>Byron L. Lam, MD</i>	
3:50	Multiple Evanescent White Dot Syndrome: Multimodal Imaging <i>Lawrence A. Yannuzzi, MD</i>	
4:00	A New, International Classification System and the Role of Ocriplasmin for Diseases of the Vitreomacular Interface <i>Jay S. Duker, MD</i>	

- 4:10 Ocriplasmin Safety and Side Effects
Baruch D. Kuppermann, MD, PhD
- 4:20 Update on the MacTel Project and the Lowy Medical
Research Institute: From Bench to Bedside in 8 Years
Martin Friedlander, MD, PhD
- 4:30 Intravitreal Aflibercept for Macular Edema Due to
Branch Retinal Vein Occlusion: 24 Week Results of the
VIBRANT Study
Jeffrey S. Heier, MD
- 4:40 Update on Aflibercept for Diabetic Macular Edema
Diana V. Do, MD
- 4:50 Dexamethasone Intravitreal Implant for Diabetes:
Result of the Phase 3 Trials
David S. Boyer, MD
- 5:00 Update on the DRCR Network Studies
Harry W. Flynn, Jr., MD
- 5:10 Treatment of Diabetic Macular Edema
by Tie2 Activation with an Inhibitor of Vascular
Endothelial-Protein Tyrosine Phosphatase
Peter A. Campochiaro, MD
- 5:20 Interleukin-1-beta Inhibition in Proliferative Diabetic
Retinopathy: Interim Analysis of a Clinical Pilot Study
Stephan Michels, MD, MBA
- 5:30 Additional Pharmacologic Agents in
Development for Diabetic Macular Edema
Quan Dong Nguyen, MD, MSc
- 5:40 Non-Visible Non-Lethal
Photocoagulation for Treatment of Macular Edema
Employing the Arrhenius Calculation
Mark S. Blumenkranz, MD
- 5:50 Peripheral Diabetic Retinopathy
Diagnoses and Management
Michael T. Trese, MD
- 6:00 **Adjourn/Cocktail Reception**

MEETING
REGISTRATION
FORM

Bascom Palmer Eye Institute Angiogenesis, Exudation, and Degeneration 2014

Saturday, February 8, 2014

Registration is limited, so please register early.

Last Name / First Name *(as you want it to appear on name badge)* / Degree

Last Four Digits of Social Security Number *(for record keeping purposes only)*

Specialty / Sub-specialty

Affiliated Institution

Address *(Check box if new address)*

City/State

Country / Zip or Postal Code

Office phone

Office fax

Email

REGISTRATION: \$425

Enclosed is my check made payable to
Bascom Palmer Eye Institute—Angiogenesis 2014

Please bill my credit card:

Mastercard Visa American Express

Card number

Security code

Expiration date

Billing zip code

Name on card

Signature

By fax: Please complete this registration form with your credit card payment and fax to (305) 326-6518. **By mail:** Please complete this registration form and return with your check or credit card payment to:
Bascom Palmer Eye Institute

Continuing Medical Education Department
1120 NW 14th Street, Suite 1558
Miami, FL 33136
(Attn: Karen Davila)

SPEAKERS

Jayakrishna Ambati, MD

Professor and Vice Chair
Dr. E Vernon Smith & Eloise C. Smith
Endowed Chair
Department of Ophthalmology & Visual Sciences
University of Kentucky
Lexington, KY

Robert L. Avery, MD

Founder, California Retina Consultants
Co-Founder, California Retina Research
Foundation
Neuroscience Research Institute at UCSB
Santa Barbara, CA

Mark S. Blumenkranz, MD

H.J. Smead Professor and Chairman
Director, Byers Eye Institute at Stanford
Stanford University School of Medicine
Palo Alto, CA

David S. Boyer, MD

Clinical Professor of Ophthalmology
Keck School of Medicine
University of Southern California
Retina-Vitreous Associates Medical Group
Los Angeles, CA

David M. Brown, MD, FACS

Clinical Associate Professor of Ophthalmology
Weill Cornell Medical College
The Methodist Hospital
Retina Consultants of Houston
Houston, TX

Peter A. Campochiaro, MD

George S. and Dolores Dore Eccles Professor
of Ophthalmology and Neuroscience
Wilmer Eye Institute
The Johns Hopkins University
School of Medicine
Baltimore, MD

Usha Chakravarthy, MD

Professor of Ophthalmology
Queens University of Belfast
Royal Victoria Hospital (The Belfast Trust)
Northern Ireland, United Kingdom

Thomas W. Chalberg, PhD

President and Chief Executive Officer
Avalanche Biotechnologies, Inc.
San Francisco, CA

Emily Y. Chew, MD

Deputy Director, Division of Epidemiology &
Clinical Applications
Chief of Clinical Trials
National Eye Institute
Bethesda, MD

Scott W. Cousins, MD

Robert Machemer, MD, Professor of
Ophthalmology and Immunology
Vice Chair for Research
Director, Duke Center for Macular Diseases
Duke Eye Center
Duke University
Durham, NC

Karl G. Csaky, MD, PhD

T. Boone Pickens Senior Scientist
Head, Harrington Molecular Laboratory
Retina Foundation of the Southwest
Dallas, TX

Christine A. Curcio, PhD, FARVO

Professor of Ophthalmology
Director, Age-related Maculopathy
Histopathology Laboratory
University of Alabama School of Medicine
EyeSight Foundation Vision Research Labs
Birmingham, AL

Lyndon da Cruz, MD, MA, FRACO, FRCOph, PhD

Consultant Ophthalmic Surgeon
Moorfields Eye Hospital
London, England

Ronald P. Danis, MD

Professor of Ophthalmology
Director, UW-Madison Fundus Photograph
Reading Center
University of Wisconsin
Madison, WI

Diana V. Do, MD

Vice Chair for Education
Director of the Carl Camras Center for
Innovative Clinical Trials in Ophthalmology
Stanley M. Truhlsen Eye Institute
University of Nebraska Medical Center
Omaha, NE

Sander R. Dubovy, MD

Professor of Ophthalmology
Bascom Palmer Eye Institute
University of Miami Miller School of Medicine
Miami, FL

Pravin U. Dugel, MD

Clinical Associate Professor of Ophthalmology
Keck School of Medicine
University of Southern California
Los Angeles, CA
Managing Partner
Retina Consultants of Arizona
Phoenix, AZ

Jay S. Duker, MD

Professor and Chairman
Director, New England Eye Center
Tufts Medical Center
Tufts University School of Medicine
Boston, MA

Michel E. Farah, MD

Professor of Ophthalmology
President, Vision Institute
Paulista School of Medicine
São Paulo Federal University
São Paulo, Brazil

Martin Friedlander, MD, PhD

Professor, Department of Cell and
Molecular Biology
Chief, Retina Services, Division of
Ophthalmology, Department of Surgery
The Scripps Research Institute
Scripps Clinic
La Jolla, CA

Anne E. Fung, MD

California Pacific Medical Center
Pacific Eye Associates
San Francisco, CA

Ninel Z. Gregori, MD

Associate Professor of Clinical Ophthalmology
Bascom Palmer Eye Institute
University of Miami Miller School of Medicine
Miami, FL

Gregory S. Hageman, PhD

John A. Moran Presidential Professor
Executive Director, Moran Center
for Translational Medicine
John A. Moran Eye Center
University of Utah
Salt Lake City, UT

Jeffrey S. Heier, MD

Director, Vitreo-Retina Service
Ophthalmic Consultants of Boston
Boston, MA

David R. Hinton, MD, FARVO

Professor of Pathology and Ophthalmology
Gavin S. Herbert Professor
of Retinal Research
Associate Dean of Vision Science
Vice Chair, Department of Pathology
Keck School of Medicine
University of Southern California
Los Angeles, CA

RACO,

Allen C. Ho, MD

Professor of Ophthalmology
Director, Retina Research
Wills Eye Hospital
Thomas Jefferson University
Mid Atlantic Retina
Philadelphia, PA

Glenn J. Jaffe, MD

Professor of Ophthalmology
Chief, Vitreoretinal Service
Director, Duke Reading Center
Duke Eye Center
Duke University School of Medicine
Durham, NC

Peter K. Kaiser, MD

Professor of Ophthalmology
Chaney Family Endowed Chair
for Ophthalmology Research
Cleveland Clinic Lerner College of Medicine
Cole Eye Institute
Cleveland, OH

Jaclyn L. Kovach, MD

Assistant Professor of Clinical Ophthalmology
Bascom Palmer Eye Institute Retina Center
at Naples
University of Miami Miller School of Medicine
Naples, FL

Baruch D. Kuppermann, MD, PhD

Professor of Ophthalmology and
Biomedical Engineering
Chief, Retina Service
Vice Chair, Clinical Research
The Gavin Herbert Eye Institute
University of California, Irvine
Irvine, CA

Byron L. Lam, MD

Professor of Ophthalmology
Bascom Palmer Eye Institute
University of Miami Miller School of Medicine
Miami, FL

Theodore Leng, MD, MS

Clinical Assistant Professor of Ophthalmology
Byers Eye Institute at Stanford
Stanford University School of Medicine
Palo Alto, CA

Xiaoxin Li, MD

Professor and Chair
Eye Center of People's Hospital
Peking University
Beijing, China

Daniel F. Martin, MD

Barbara and A. Malachi Mixon III Institute
Chair in Ophthalmology
Chairman
Cole Eye Institute
Cleveland Clinic
Cleveland, OH

Stephan Michels, MD, MBA

Associate Professor of Ophthalmology
Head, Medical Retina
Triemli Hospital Zurich
Zurich, Switzerland

Darius M. Moshfeghi, MD

Associate Professor
Byers Eye Institute at Stanford
Stanford University School of Medicine
Palo Alto, CA

Quan Dong Nguyen, MD, MSc

Professor and Chairman
Director of the Stanley M. Truhlsen
Eye Institute
McGaw Memorial Endowed Chair
in Ophthalmology
University of Nebraska Medical Center
Omaha, NE

Hugo Quiroz-Mercado, MD

Professor of Ophthalmology
University of Colorado School of Medicine
Denver, CO

Carl D. Regillo, MD, FACS

Professor of Ophthalmology
Director, Retina Service
Wills Eye Institute
Thomas Jefferson University
Philadelphia, PA

Elias Reichel, MD

Professor and Vice Chair of Ophthalmology
Director, Vitreoretinal Service
New England Eye Center
Tufts Medical Center
Tufts University School of Medicine
Boston, MA

SriniVas R. Sadda, MD

Professor of Ophthalmology
Keck School of Medicine
University of Southern California
Los Angeles, CA

Johanna M. Seddon, MD, SCM

Professor of Ophthalmology
Founding Director, Ophthalmic Epidemiology
and Genetics Service
New England Eye Center
Tufts Medical Center
Tufts University School of Medicine
Boston, MA

**Lawrence J. Singerman, MD,
FACS, FICS**

Clinical Professor of Ophthalmology
Case Western Reserve University
Retina Associates of Cleveland, Inc.
Beachwood, OH
Voluntary Professor of Ophthalmology
Bascom Palmer Eye Institute
University of Miami Miller School of Medicine

Jason S. Slakter, MD

Clinical Professor of Ophthalmology
New York University School of Medicine
Partner, Vitreous-Retina Macula Consultants
of New York
New York, NY

Glenn L. Stoller, MD, FACS

Ophthalmic Consultants of Long Island
Rockville Center, NY

Masayo Takahashi, MD, PhD

RIKEN Center for Developmental Biology (CDB)
Chuo-ku, Kobe, Japan

Mariana R. Thorell, MD

Post Doctoral Associate
Bascom Palmer Eye Institute
University of Miami Miller School of Medicine
Miami, FL

Michael T. Trese, MD

Clinical Professor of Ophthalmology
Chief of Pediatric & Adult Vitreoretinal Surgery
William Beaumont Hospital
Oakland University William Beaumont School
of Medicine
Associated Retinal Consultants
Royal Oak, MI

Lawrence A. Yannuzzi, MD

Professor of Clinical Ophthalmology
Columbia University School of Medicine
Founder and Director, LuEsther T. Mertz Retinal
Research Center and Macula Foundation, Inc.
New York, NY

Kang Zhang, MD, PhD

Professor of Ophthalmology and
Human Genetics
Founding Director, UCSD Institute for
Genomic Medicine
University of California San Diego
La Jolla, CA

Bascom Palmer Eye Institute Angiogenesis, Exudation, and Degeneration 2014

DATE

Saturday, February 8, 2014: 7:55 am to 5:30 pm

LOCATION

Mandarin Oriental, Miami

500 Brickell Key Drive, Miami, FL 33131

Reservations: (800) 526-6566 Direct: (305) 913-8288

Mandarin Oriental, Miami is one of America's finest hotels and recently awarded the AAA Five Diamond Award. Ideally located on prestigious Brickell Key, its deluxe, waterfront location perfectly befits the opulence you'll find within. The rooms are luxurious, the award-winning restaurants are some of the finest in Miami and the spa is one of the most beautiful in the world. The hotel's extensive leisure facilities make it the perfect choice for a conference or a holiday in Miami.

HOTEL RESERVATIONS

For hotel information and reservations, please call (305) 913-8288 or (800) 526-6566.

The special hotel rate for conference attendees is \$379 per night for single or double plus tax. Mandarin Oriental, Miami will extend the special group rate for three days prior and three days after the main program dates, subject to availability. Check-in time is 3:00 pm; Check-out time is 12:00 noon.

We suggest you make your hotel reservations as soon as possible as the winter months are the height of South Florida's tourist season. Bascom Palmer's preferred room rate will be released after January 8, 2014. Reservations and deposits received after that time are subject to current rates and availability. Please contact the Mandarin Oriental Miami for hotel cancellation policies. For additional information visit: www.mandarinoriental.com/miami

CONFERENCE FEES

Registration rate is \$425.

Conference fees include course materials, opening reception, continental breakfast, lunch and refreshment breaks.

CANCELLATION POLICY

Conference tuition, less \$100 cancellation fee, is refundable if notice is received on or before January 8, 2014. Cancellations received on or after January 9, 2014 will not be refunded.

ACCREDITATION

University of Miami Leonard M. Miller School of Medicine is accredited by the Accreditation Council for Continuing Medical Education to provide continuing medical education for physicians.

CREDIT DESIGNATION

The University of Miami Leonard M. Miller School of Medicine designates this live activity for a maximum of **9.25 AMA PRA Category 1 Credits™**. Physicians should claim only the credit commensurate with the extent of their participation in the activity.

DISCLOSURE AND CONFLICT OF INTEREST RESOLUTION

All conflicts of interest of any individual in a position to control the content of this CME activity will be identified and resolved prior to this educational activity being provided. Disclosure about provider and faculty relationships, or the lack thereof, will be provided to learners.

SERVICES FOR THE DISABLED

If special arrangements are required for an individual with a disability to attend this conference, please contact Karen Davila at (305) 326-6110 on or before January 15, 2014.

REGISTRATION Space is limited. Please register early.

To register by mail: Please complete the registration form and return with your check or credit card payment to:

Bascom Palmer Eye Institute

Department of Continuing Medical Education

1120 NW 14th Street, Suite 1558, Miami, FL 33136

(Att: Karen Davila)

To register by fax: Please complete the registration form and return with your credit card payment to (305) 326-6518.

For more information contact:

Bascom Palmer Eye Institute

Department of Continuing Medical Education

at (305) 326-6110 / Email: bascompalmercme@miami.edu



www.bascompalmer.org